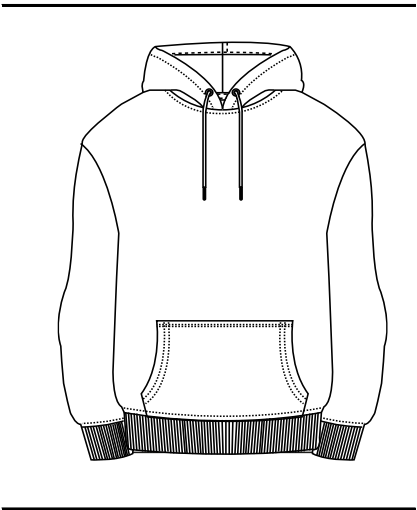


Style Code: EA042

Style Name: Crater Recycled Hoodie



Retail Copy:
Your new favourite sustainable hoodie. With a boxy, oversized, unisex fit this hoodie is both stylish and comfortable. Made from recycled cotton and recycled polyester with a peached finish, this garment allows you to look good and feel good while doing your part by wearing sustainable. Pair with Crater Recycled Jogpants for a perfect set!

| Colours: | CMYK References | Sizes |
|--------------|-----------------|--------|
| Heather Grey | 12, 8, 9, 23 | XS-XXL |
| Black | Black | XS-XXL |
| Navy | 99, 74, 31, 84 | XS-XXL |

| Sizes to fit: | XS | 32" |
|---------------|-----|-----|
| | S | 36" |
| | M | 40" |
| | L | 44" |
| | XL | 48" |
| | 2XL | 52" |

Fabric Name: Recycled Fleece

Fabric Content: 70% Recycled Cotton 30% Recycled Polyester

Fabric Weight: 280gsm

| | |
|----------------------|--|
| Carton Qty: | 30 |
| Pack Qty: | 5 |
| Key Features: | <p>Relaxed unisex fit</p> <p>Kangaroo pouch pocket</p> <p>2x1 ribbed cuffs and hem</p> <p>Peached face</p> <p>Brushed inner fleece</p> <p>Size tab only for easy rebranding</p> <p>DTM drawcords</p> |

Wash Care Instructions:



Icons:



Compliance:

Our vision is to build a better future for our planet, working hard to ensure that environmental sustainability and low carbon impact is at the forefront of our thinking and innovation. As a responsible and ethical brand we ensure all of our manufacturing methods go above and beyond the ideals of our growing customer base, using only factories that are GOTS, RCS, SEDEX, BSCI or Oeko-Tex Certified



Why use Recycled Cotton?

Waste cotton is collected and sorted by colour → 'Clips' are shredded and blended with recycled polyester derived from waste plastic bottles → Re-spun and knitted into new garment

Recycles:

- On average 0.22kg of cotton waste and 19 plastic bottles per sweater

Reduces:

- The land mass needed to grow new cotton; saving 200g of pesticides and fertilizers as a result
- Energy usage; saving 3.2kWh

Saves:

- 20,000 litres of water
- 2.7kg of dyes and chemicals
- 11kg of CO2 emissions